

# MODIS Land Product Data Subsets

Moderate Resolution Imaging Spectroradiometer Land Product Subsets

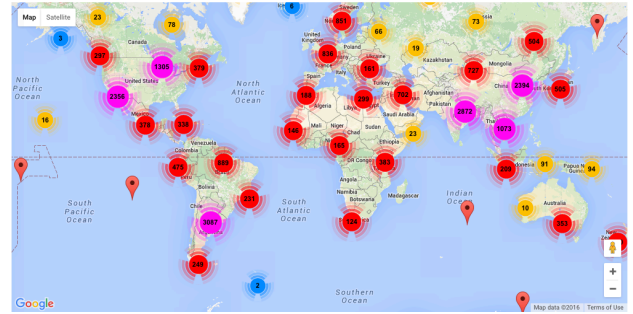


## Introduction

Moderate Resolution Imaging Spectroradiometer (MODIS) land data products from NASA's Terra and Aqua satellites are used by researchers from a variety of disciplines to study ecology, earth science, and global change.

Our subsetting services prepare and distribute user-defined subsets of selected MODIS Land Products at a scale useful for field researchers in easy-to-use formats.

## Global Subset: Study Locations



Over 25,000 orders (Global Tool) in 2015

## Three Tools to Subset and Visualize MODIS Data

### Global Subsets

<http://daac.ornl.gov/modisglobal>

#### User requested subsets

via web interface, specifying:

- Spatio-temporal extent
- Land product requested
- E-mail

#### Subset order download page

- GeoTIFF & CSV text files
- Interactive visualization
- Data citation

### Web Service

<http://daac.ornl.gov/modiswebservice>

#### Programmatically access subsets

- for multiple locations in real time
- Integrate with user workflows
- Supports multiple languages



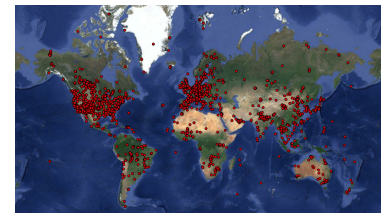
<https://daac.ornl.gov/MODIS/>

### Fixed Site Subsets

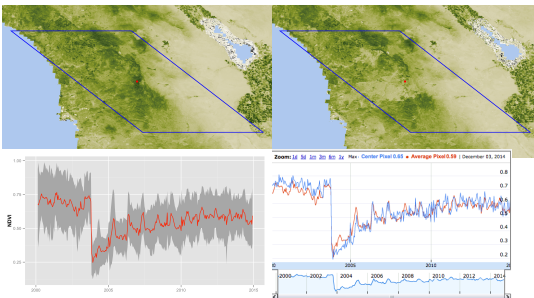
<http://daac.ornl.gov/modisfixedsite>

#### Pre-processed subsets

- for 1100+ field sites worldwide
- Immediate download
- GeoTIFF or CSV subsets



## Visualization and Applications



NDVI time-series and GeoTIFFs before and after a California forest fire.

### Real-world applications



MODIS data can be used for modeling vegetation and bird migration, phenology of honey production, and many other applications.

## Contact Us

Makhan Viridi  
email: [virdiml@ornl.gov](mailto:virdiml@ornl.gov)

Suresh K.S. Vannan  
email: [santhanavans@ornl.gov](mailto:santhanavans@ornl.gov)

User Services Office  
email: [support-ornl@earthdata.nasa.gov](mailto:support-ornl@earthdata.nasa.gov)